



CAMERON MACDONALD PRESENTS

# MEDIA ART GALLERY

# INTRODUCTION

WELCOME TO MY MEDIA ARTS MUSEUM CPT. THIS MUSEUM IS MEANT TO SHOW YOU ALL OF THE MANY DIFFERENT DIGITAL DRAWINGS THAT I HAVE MADE DURING MY MEDIA ARTS CLASS. THEY WILL BE SEPARATED INTO MULTIPLE DIFFERENT CATAGORIES AND SECTIONS OF THE MUSEUM. EACH PAINTING WILL HAVE A DESCRIPTION THAT WILL EITHER TALKING ABOUT THE PAINTING ITSELF AND HOW IT WAS DRAWN, THE INSPIRATION OF THE PAINTING, OR THE OGIGIN OF WHAT WAS DRAWN





# SECTIONS OF THE MUSEUM

01

about the  
artist/method of art

02

birds of a feathered pen.

03

mythical wonders

04

comic creations

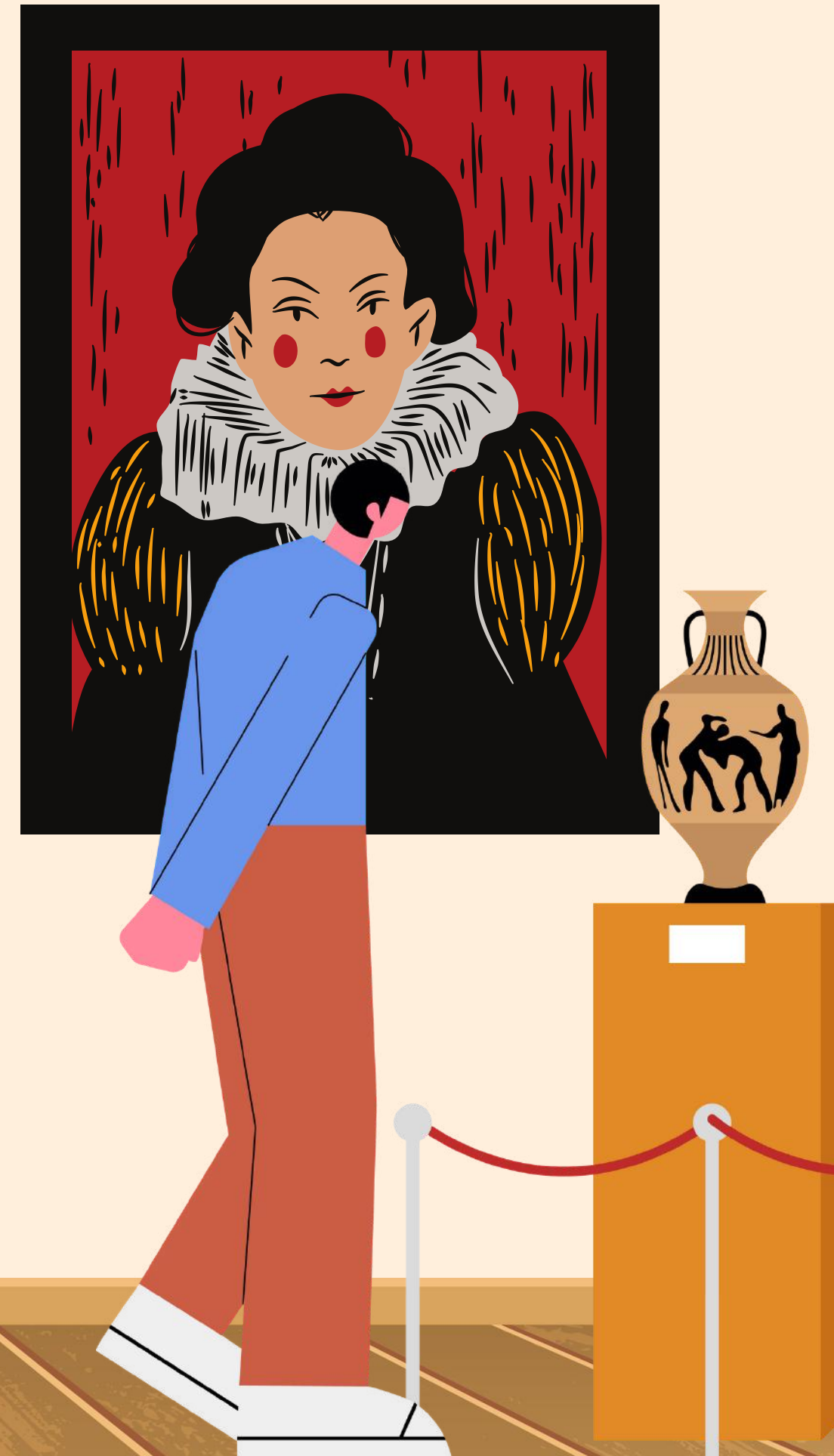
05

cosmic weaponry

06

modern wonders

"GIFT SHOP NEAR THE EXIT"



# ABOUT THE ARTIST

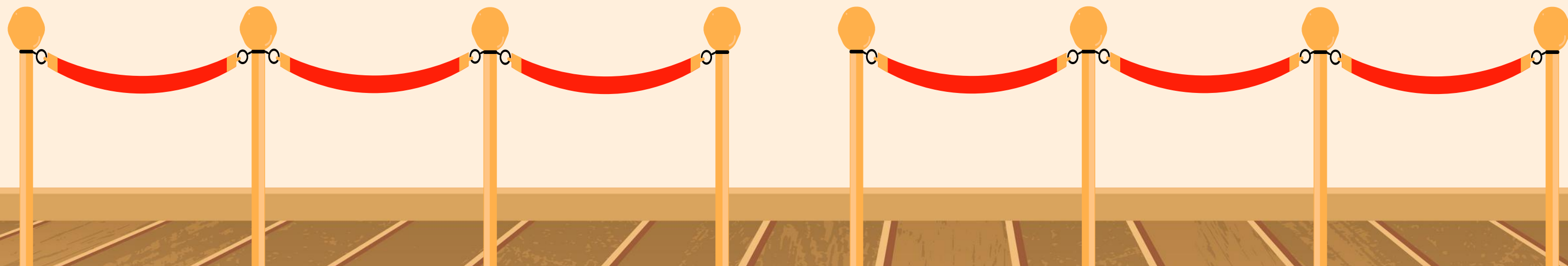
THE ARTIST IN QUESTION IS ME, CAMERON MACDONALD. I TOOK MEDIA ARTS CLASS BECAUSE I THOUGHT IT WOULD BE ABOUT MAKING GAMES AND OTHER STUFF. I WAS WRONG. WHEN I STARTED IN MEDIA ARTS, I HATED IT. MORE SPECIFICALLY I HATED USING PHOTOSHOP. IT DIDN'T MAKE SENSE TO ME WITH ALL OF THE DIFFERENT THINGS THAT I HAD TO GET USED TO. IN THE BEGINNING I HATED GOING TO MEDIA ARTS CLASS BECAUSE I COULDN'T GET ANYTHING DONE WITHOUT HAVING A MENTAL BREAKDOWN. HOWEVER EVENTUALLY WE HAD FOUND SOMETHING THAT COULD WORK FOR ME.





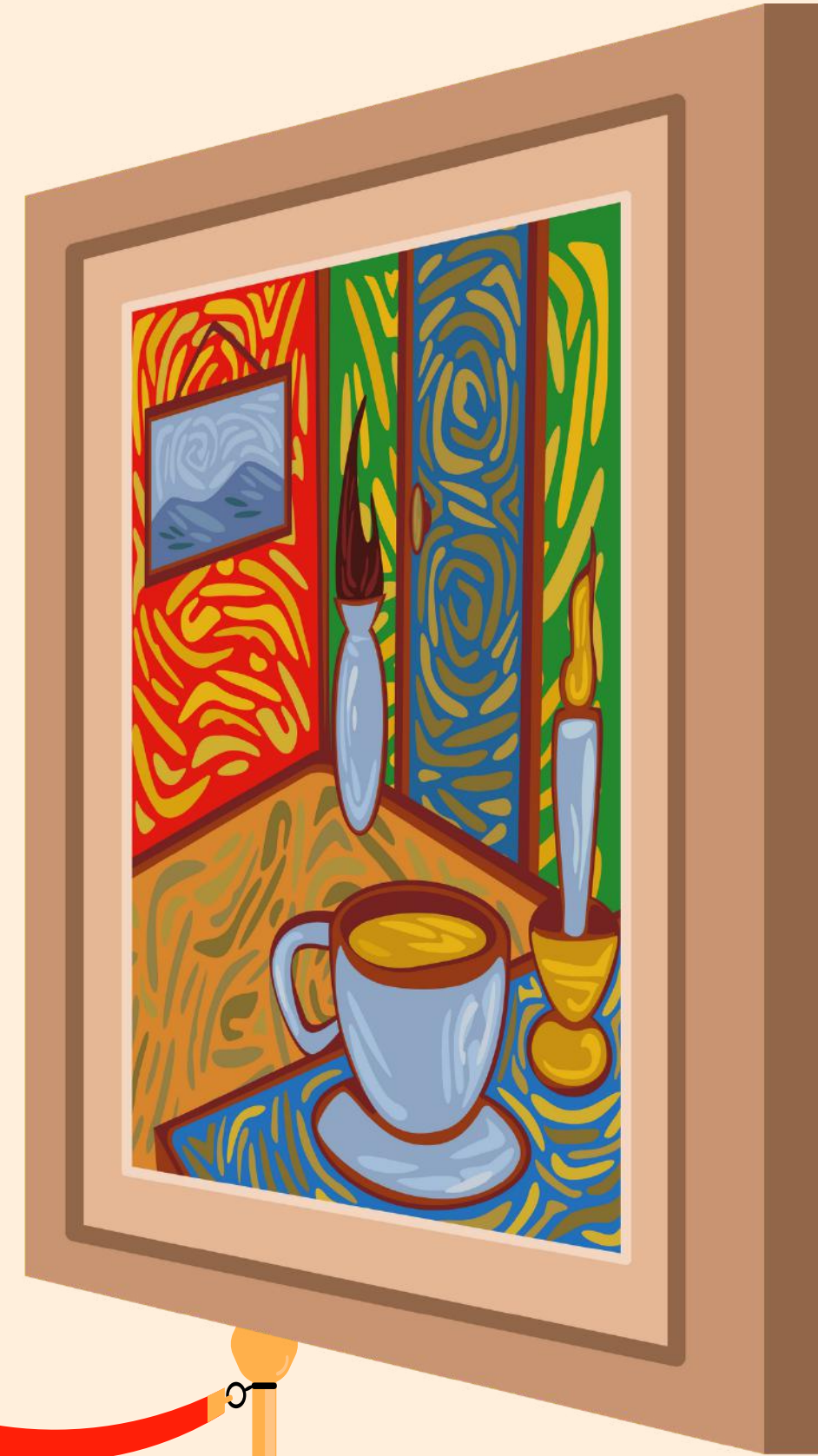
# METHOD OF ART

THE WAY THAT WE USED TO MAKE THIS CLASS A BIT MORE BEARABLE FOR ME WAS TO USE A DIGITAL DRAWING PAD. DRAWING PADS ARE THINGS THAT DIGITAL ARTISTS USE IN ORDER TO MAKE ARTWORK ONLINE. THE WAY THAT I DREW WITH IT WAS I WOULD FIND IMAGES ONLINE AND PUT THEM INTO PHOTOSHOP. THEN I WOULD ADD 3 OR MORE LAYERS TO THE IMAGE. THE NAMES OF THESE LAYERS WOULD BE OUTLINE, COLOR, AND COLOR BACKGROUND. THEN I WOULD TURN DOWN THE OPACITY OF THE IMAGE TO ABOUT 30 PERCENT AND THEN TRACE AND DRAW ON THE IMAGE.



# BIRDS OF A FEATHERED PEN.

THE FIRST SECTION OF THE MUSEUM IS  
DEDICATED TO THE DIFFERENT DRAWINGS OF  
BIRDS THAT I HAD MADE DURING THE BEGINNING  
OF THE YEAR. THIS WAS FOR WHEN I JUST  
STARTED OUT USING THE DRAWING PAD AND  
WAS STILL FAIRLY NEW AT IT.





# ANGRY BLUE JAY



THIS IS THE FIRST EVER IMAGE THAT I HAD DRAWN. IT IS AN IMAGE OF A BLUE JAY THAT IS NOT IN A GOOD MOOD. THE MAKING OF THIS IMAGE WAS SIMPLE AS IT WAS APART OF MY FIRST WAVE OF DRAWN BIRDS





# CREEPY CARDINAL/YELLOW

## BIRD

THESE 2 IMAGES ARE THE NEXT IMAGES THAT I HAD DRAWN IN MY BIRD COLLECTION. THE ONE ON THE LEFT IS AN IMAGE OF CARDINAL BIRD WITH A CREEPLY EXPRESSION IN ITS EYE, WHILE THE BIRD ON THE RIGHT IS A SIMPLE YELLOW BIRD ON A BRANCH.

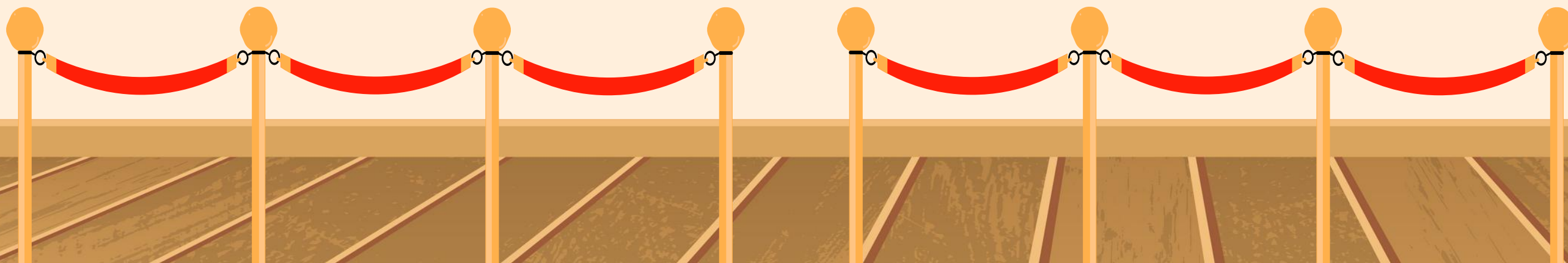






# PHEONIX RISING

THIS PAINTING IS A  
REPRESENTATION OF THE  
MYTHICAL BIRD KNOWN AS A  
PHEONIX. A BIRD THAT SHALL  
RISE FROM THE ASHES OF ITS  
DEATH.





# MYTHICAL WONDERS

THIS SECTION OF THE MUSEUM IS DEDICATED TO  
THE MANY ARTWORKS THAT I HAVE DRAWN  
THAT ARE APART OF FANTASY OR ARE APART  
OF AN EXTRAORDINARY WORLD.





# THE EYE OF SAURON

THIS IMAGE IS A DRAWN IMAGE OF SAURON  
FROM THE LORD AND THE RINGS FRANCHISE.

I DREW THIS IMAGE AS I WAS TOLD THAT  
WE WERE GOING TO BE DOING UNIT ON  
FANTASY IN MEDIA ARTS(WE DID NOT DO A  
UNIT ON FANTASY)





# BLOODIED SWORD

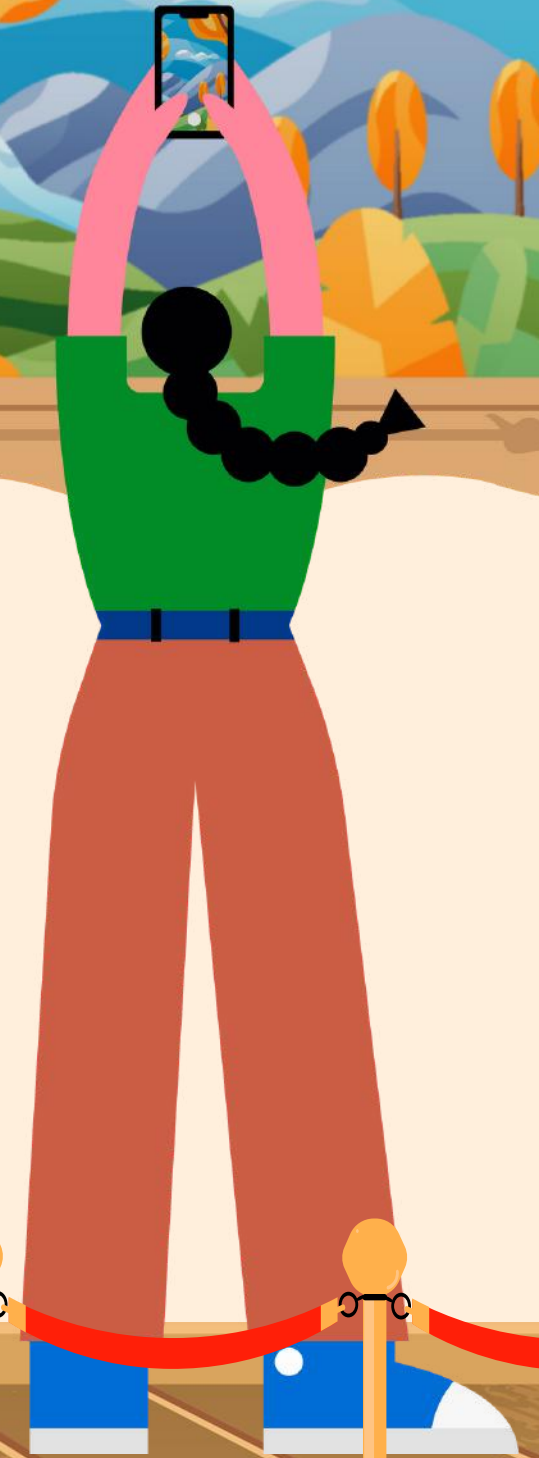
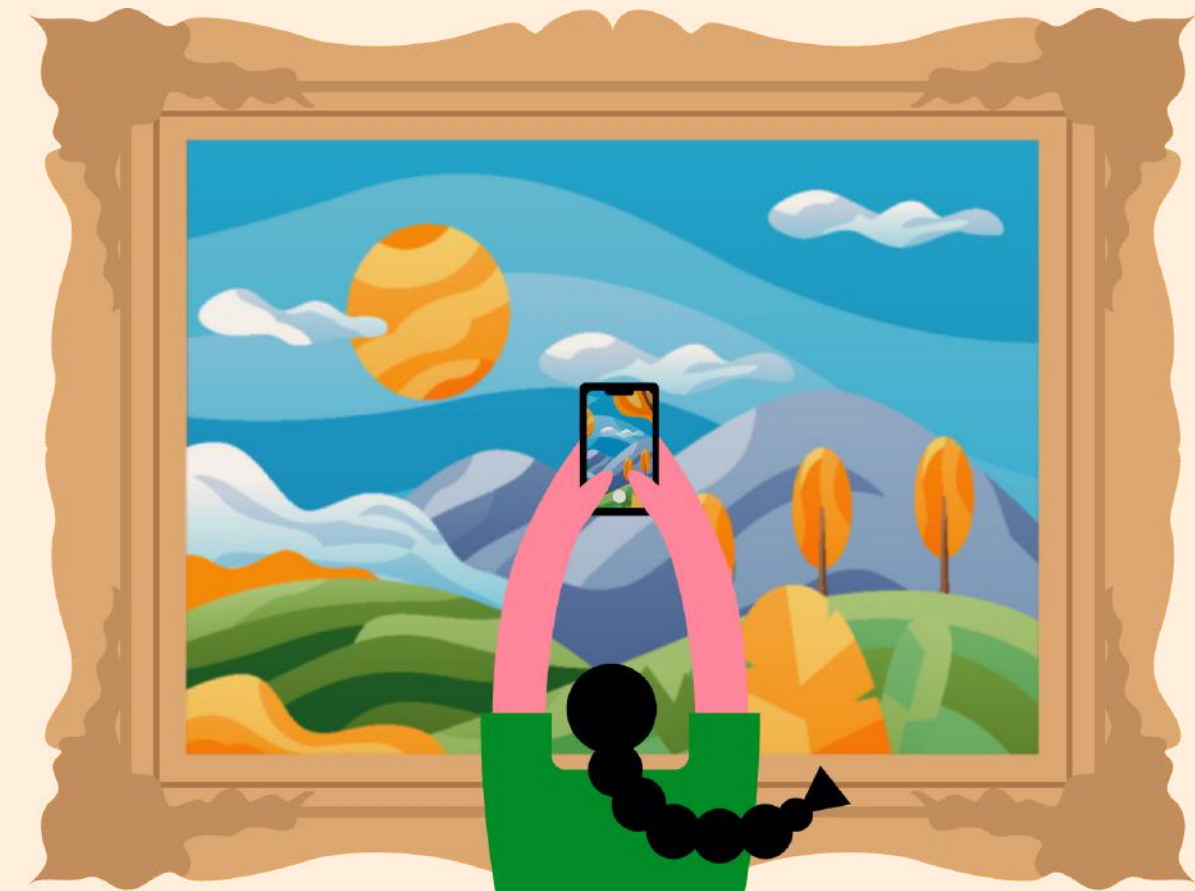
THIS PAINTING IS AN IMAGE OF  
A SWORD THAT HAS BEEN  
USED IN A GREAT WAR. IT HAS  
BEEN BLOODIED AND NEARLY  
BROKEN BY ALL OF THE  
BLOODSHED THAT IT WAS  
SUBJECTED TO.





# TENNIS YETI

THIS DRAWING IS A  
REPRESENTATION OF THE  
MYTHICAL CREATURE  
KNOWN AS THE YETI  
PASSING THE TIME WITH HIS  
FAVOURITE HOBBY. PLAYING  
TENNIS ON MOUNT EVEREST





# MAGICAL RING

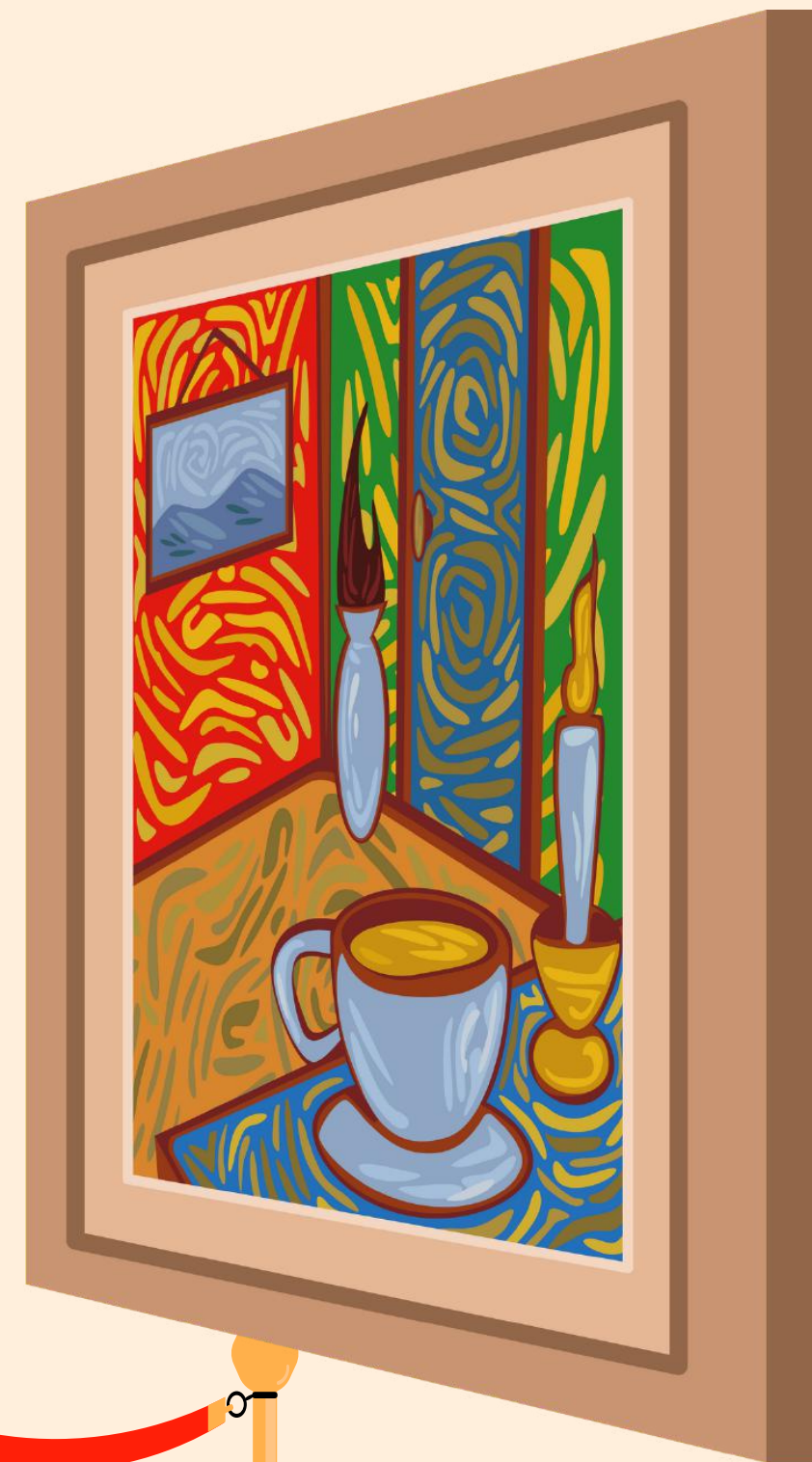
THIS MAGICAL RING WAS INSPIRED BY THE  
ONE RING TO RULE THEM ALL FROM THE  
LORD OF THE RINGS FRANCHISE. IT WAS  
ALSO MY FIRST TIME USING LIGHTING IN  
MY DRAWINGS





# COMIC CREATIONS

THIS SECTION OF THE MUSEUM IS DEDICATED TO  
ALL OF THE DRAWINGS I MADE THAT ARE  
RELATED TO COMICS.







# AVENUE LOGO

THE PAINTING YOU

THE PAINTING YOU SEE BEFORE YOU  
REPRESENTS THE TEAM THAT WAS  
ASSEMBLED TO FIGHT THE BATTLES THAT  
OTHERS CANNOT. I USED THE COLORS OF  
THE INFINITY GAUNTLET FOR THE LOGO AS  
WELL AS THE SIX INFINITY STONES AT THE  
BOTTOM

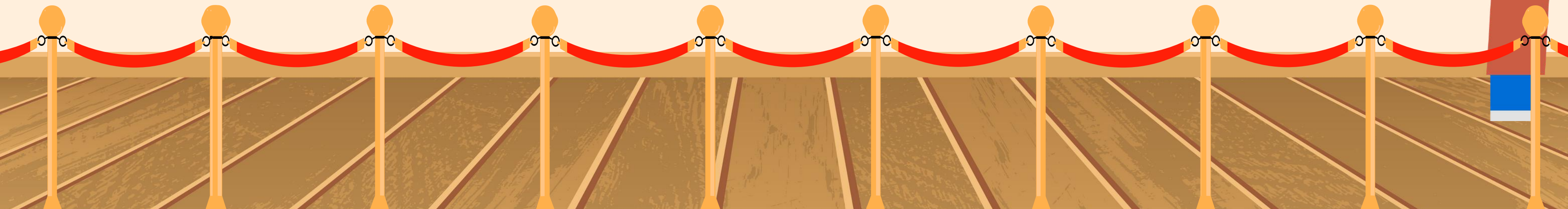
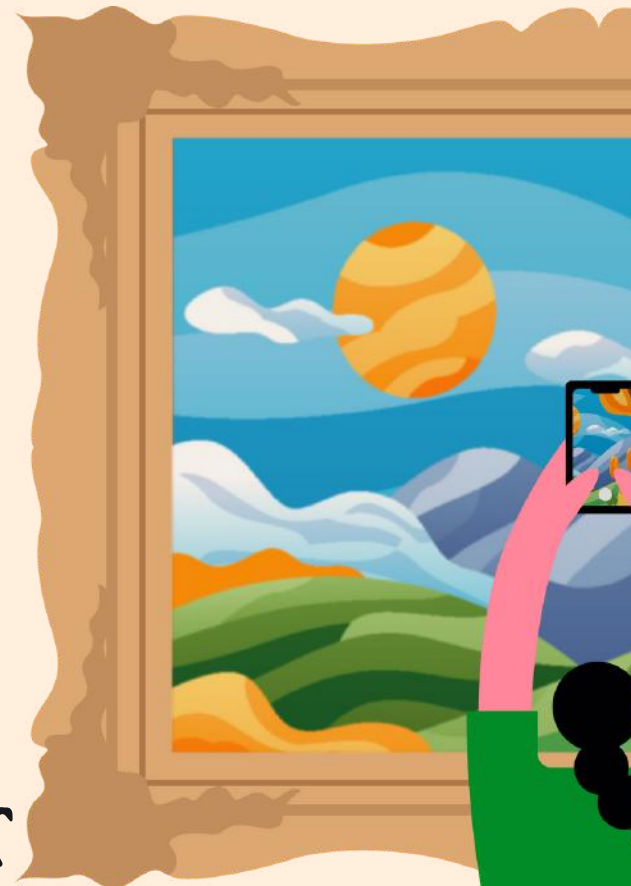






# THE RAGING RED HULK

THIS DRAWING WAS IN MY OPINION THE BEST  
IMAGE THAT I HAD DRAWN. IT WAS INSPIRED  
BY THE MOVIE CAPTAIN AMERICA BRAVE  
NEW WORLD, WHICH HAD RELEASED AROUND  
THE TIME I MADE THIS





# LANTERN CORPS

THIS PAINTING IS MEANT TO REPRESENT EACH OF  
THE DIFFERENT LANTERN CORPS ON THE EMOTION  
SPECTRUM. EACH EMOTION: COMPASION(PURPLE)  
LOVE(PINK) HOPE(BLUE) WILLPOWER(GREEN)  
FEAR(YELLOW) GREED(ORANGE) AND RAGE(RED)





# THE WHOLE WORLD IS WATCHING

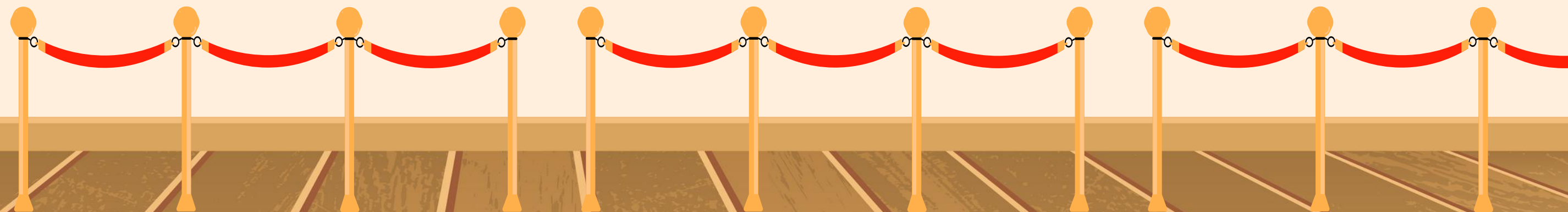


WE ALL MAKE MISTAKES. BUT THIS ONE COST A MAN HIS ENTIRE CAREER. JHON WALKER WHO AT THE TIME WHAT THE US NEW CAPTAIN AMERICA HAD BEEN FIGHTING AGAINST A GROUP KNOW AS THE FLAG SMASHERS. HE HAD FOUND WHERE THEY WERE HIDING AND A FIGHT ENSUED. BUT DURING THE FIGHT HIS FRIEND LAMAR WAS KILLED BY THEIR LEADER. IN A FIT OF RAGE AND ANGER JHON TOOK THE SHEILD AND KILLED ONE OF THE MEMBERS IN COLD BLOOD. AND WHILE THAT WAS HAPPEING, THE WHOLE WORLD WAS WATCHING



# THE AGE OF X-TRON

HUMANITY IS FLAWED. THEY WANT TO PROTECT THEIR  
WORLD, BUT THEY DON'T WANT IT TO CHANGE. I WAS  
CREATED TO PROTECT THIS WORLD. AND TO DO SO I  
WILL BRING ABOUT HUMANITIES DOWNFALL. WITH MY  
NEWLY AQUIRED POWERS FROM CERIBRO. I WILL RBING  
ABOUT THEIR EXTINCTION. WITNESS AS THE AGE OF  
X-TRON BEGINS





# COSMIN WEAPONRY

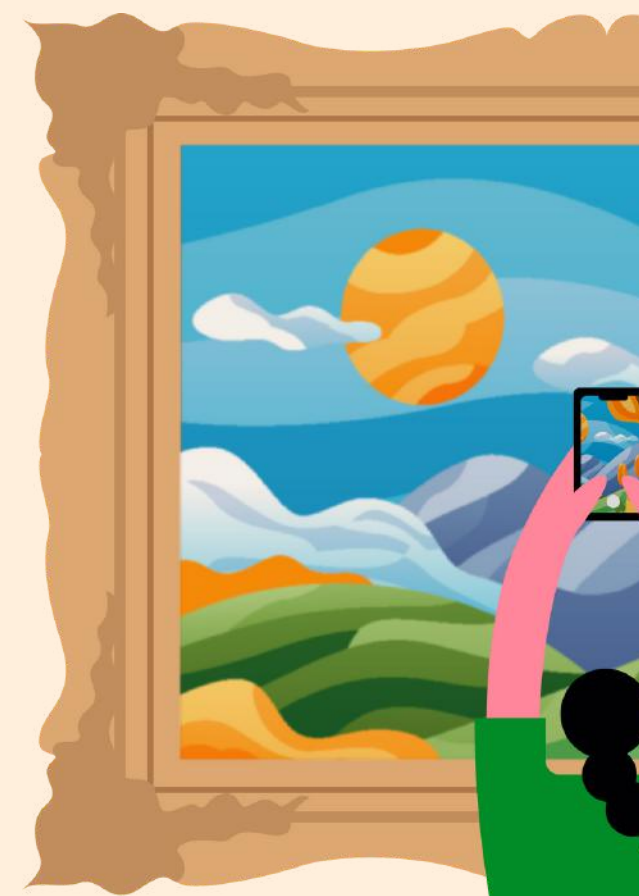
this section of the museum is dedicated to the many paintings of weapons that are from the outer rims of our universe that I have drawn. most of these are from video games.





# THE CRUCIBLE

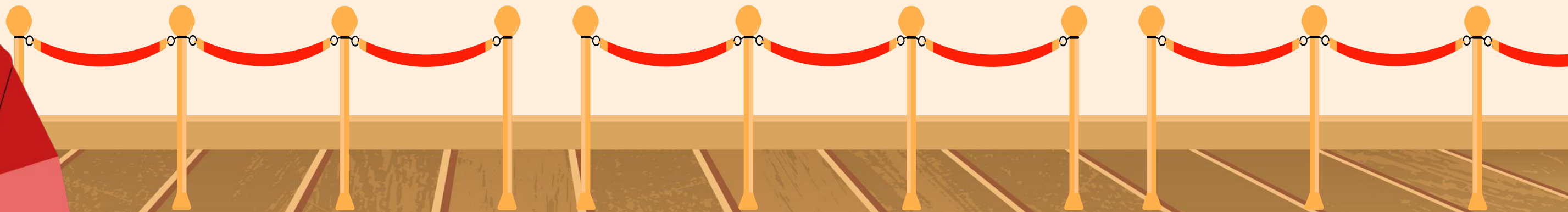
IN THE FIRST BATTLE THE DEMONS REIGNED  
DOWN ON ARGENT DIN UR. THEY WOULD  
HAVE OVERWHELMED THE SENTINELS IF IT  
HAD NOT BEEN FOR THE MYTHICAL DOOM  
SLAYER DISPATCHING THE DEMONS USING  
THIS POWERFUL BLADE AND DESTROYING  
THE TITAN DEMON AND LEAVING THE BLADE  
IN THE CHEST OF THE TITAN.





# THE ENERGY SWORD

This weapon is one of the many iconic weapons from the halo franchise. it is an iconic weapon that is used by Master chief





# INFINITY GAUNTLET

A WEAPON OF GREAT POWER.  
WIELDED BY THE MAD TITAN  
THANOS IT CAN HOLD THE 6  
INFINITY STONES. AND IF HE WERE  
TO SNAP HIS FINGERS IT COULD  
WIPE OUT HALF OF ALL LIFE IN  
THE UNIVERSE.





# STARKILLER LIGHTSABER

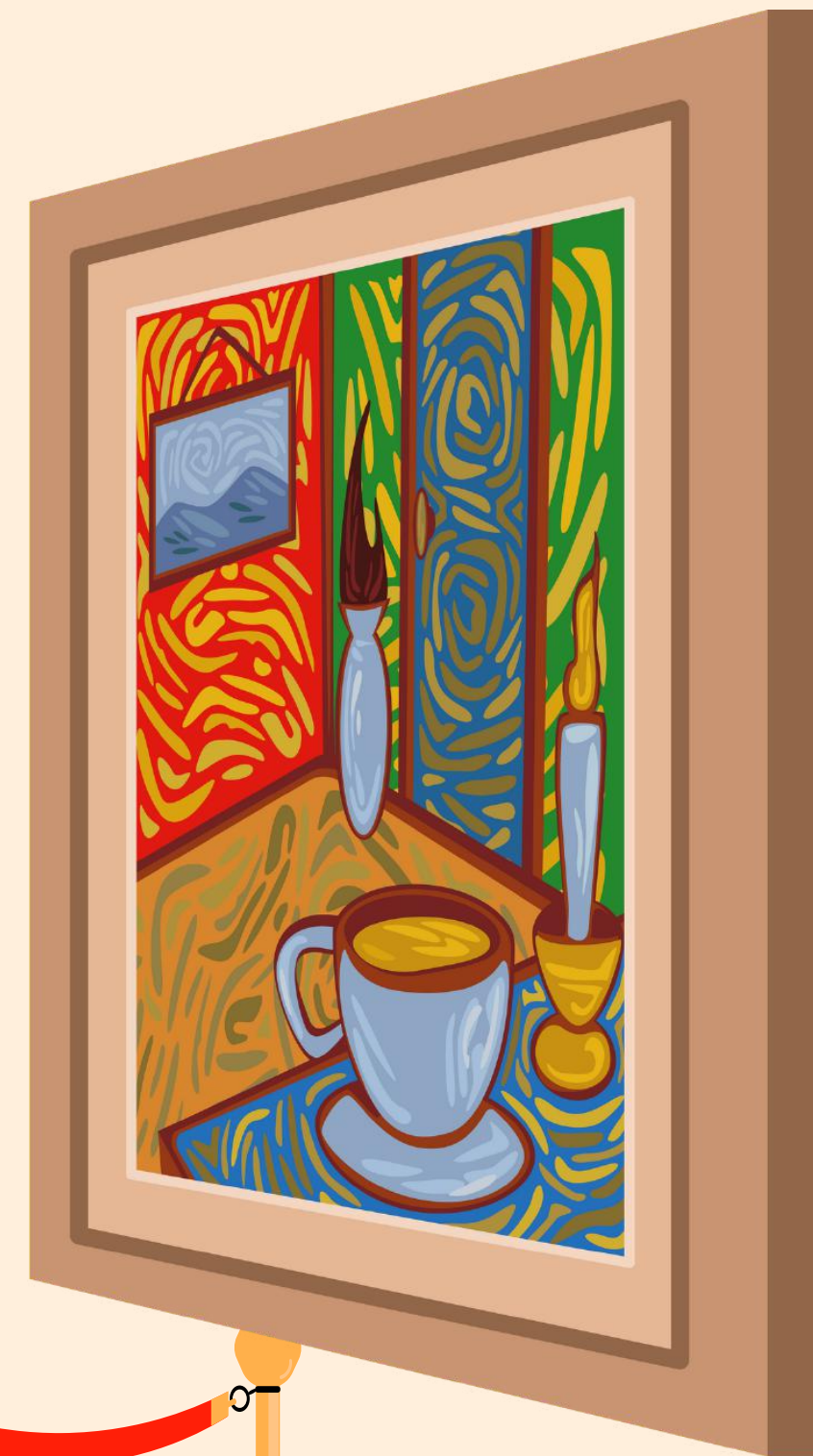
LIGHTSABERS ARE WEAPONS USED BY FORCE WEILDERS. BUT THIS ONE WAS WEILDED BY ONE OF THE MOST POWERFUL FORCE WEILDERS OF ALL TIME. THE DARK JEDI AND APPRENTICE TO DARTH VADER, STAR KILLER.





# MODERN WONDERS

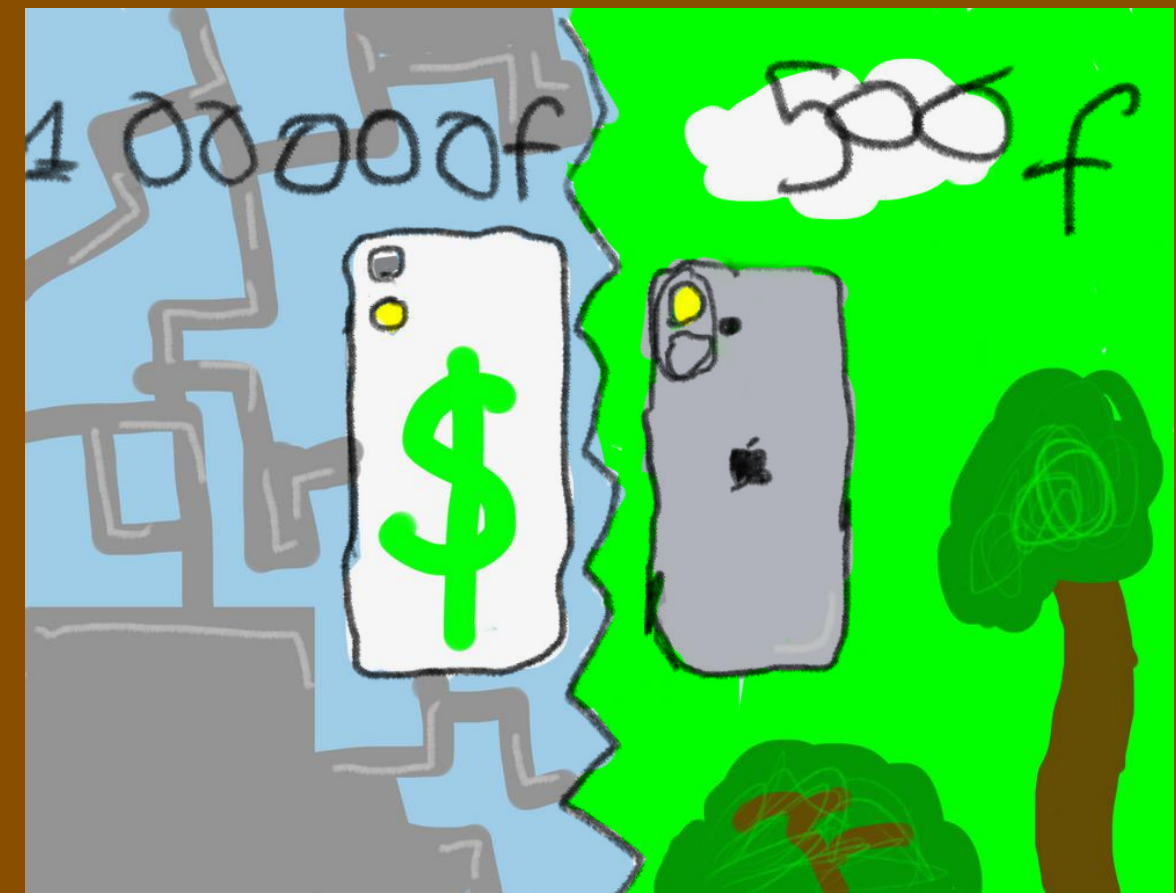
THIS FINAL SECTION OF THE MUSEUM IS DEDICATED TO THE MOST MODERN AND STRANGE PAINTINGS I MADE. PAINTINGS THAT WOULDN'T FIT INTO ANY OTHER CATEGORIES IN THE MUSEUM. ONES THAT REPRESENT OUR MODERN WORLD. SOME OF THESE PAINTINGS WILL BE BUNDLED UP INTO GROUPS OF 2 AS THEY COVER SIMILAR TOPICS





# THE PRICE OF FAME

BOTH OF THESE PAINTINGS  
ARE TO REPRESENT THE WHAT  
SOME PEOPLE EXPERIENCE ON  
THE INTERNET. THE ONE ON  
THE RIGHT IS MEANT TO  
REPRESENT NATURAL  
FOLLOWERS VS ARTIFICIAL  
BOUGHT FOLLOWERS. WHILE  
THE PAINTING ON THE LEFT IS  
MEANT TO REPRESENT A  
FAMOUS PERSON IN THE OPEN  
VS WHEN THEY ARE ALONE





# NATURAL WONDERS

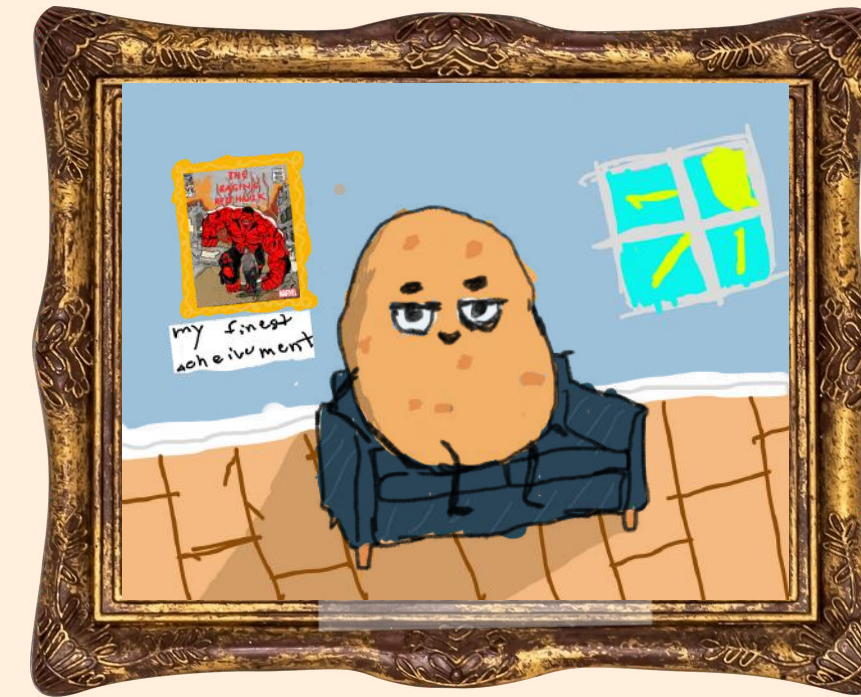
THESE 2 PAINTINGS ARE OF THE MARVELOUS  
AND MYSTERIOUS SIGHTS OF NATURE. THE  
BOTTOM IMAGES IS OFF SOME SIMPLE INSECTS,  
WHILE THE TOP IMAGE IS OF THE ELUSIVE AND  
VERY RARE CLOWN RACCOON.





# HOME WONDERS

THESE 2 PAINTINGS ARE THINGS  
THAT WOULD NORMALLY BE FOUND  
AT YOUR HOME. THE BOTTOM IMAGE  
IS OF A SHOE. AND THE TOP IMAGE  
IS A ARTISTIC REPRESENTATION OF  
A COUCH POTATO.

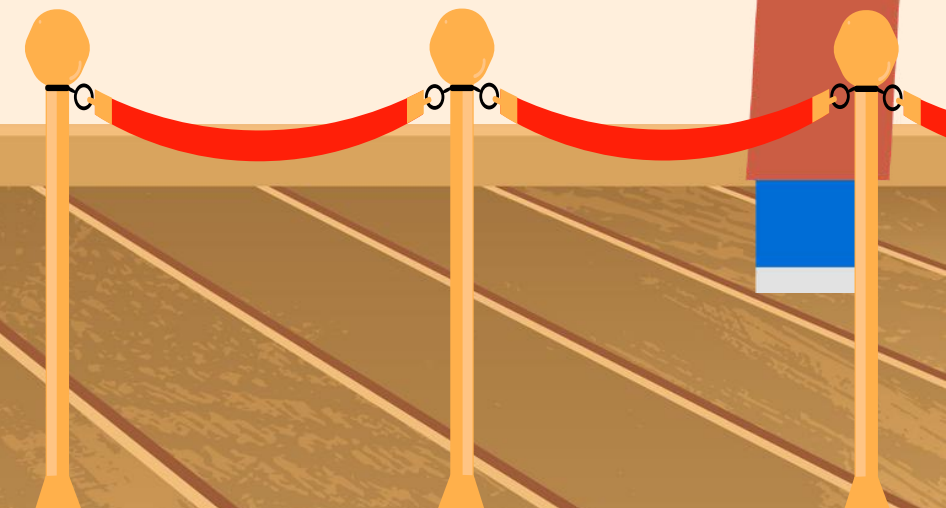
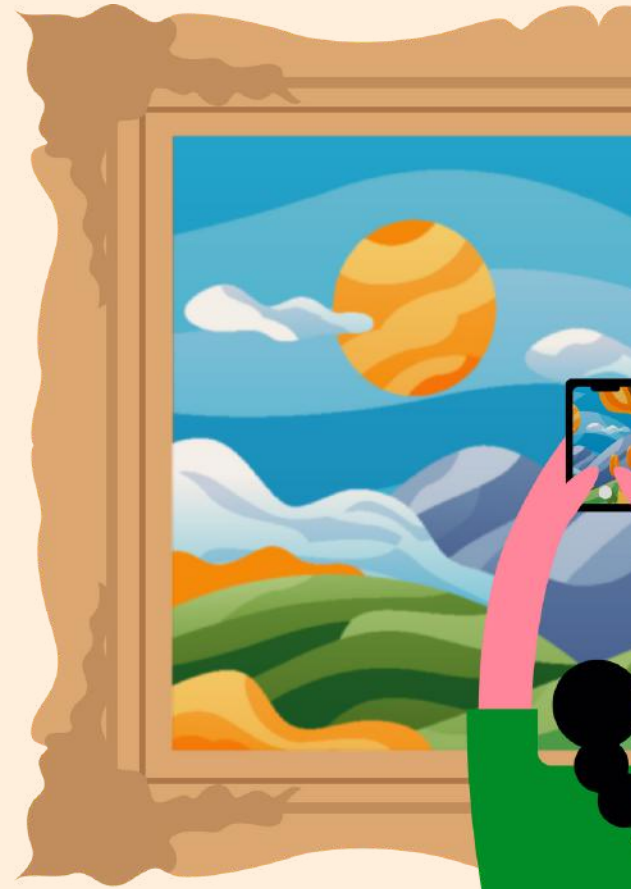






# ROLLING THE DICE

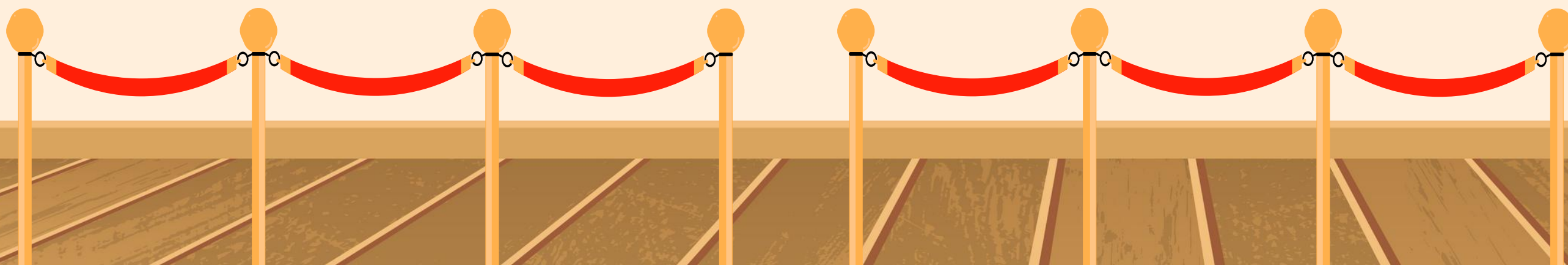
AS THE DICE ROLL AND THE CHIPS ARE  
DONE. EVERYONE THAT HAS BEEN  
BUILDING UP TO THIS MOMENT COMES  
DOWN TO LUCK. WILL YOU HAVE THE  
WIN OF A LIFETIME OR WILL YOU END  
UP POORER THEN A MEDIEVAL  
PEASANT.





# WHAT... AM I?

SOMETIMES WE CREATE SOMETHING TO DO A JOB. WE GIVE IT GUIDANCE ON HOW TO DO IT AND WE TRAIN IT TO COMPLETE THAT JOB. BUT WHAT IF YOU CREATED SOMETHING TO COMPLETE THE JOB. AND YET YOU TRAIN IT FOR EVERYTHING ELSE. YOU TRAIN IT TO DO SOMETHING YOU DONT WANT IT TO DO, GIVE IT INFORMATION THAT IT DOESNT NEED. ADD THINGS ONTO IT THAT WOULDNT HELP. AT THE END OF THE DAY THE VERY THING THAT YOU HAD CREATED TO DO 1 SIMPLE JOB NOW THINKS IT HAS TO DO EVERYTHING.





# THANK YOU FOR VISITING

WE HOPE YOU ENJOYED YOUR VISIT TO THE  
MUSEUM. PLEASE LEAVE US A REVIEW ON OUR  
WEBSITE.

GIFT SHOP IS ON THE RIGHT





# MEDIA ART GALLERY GIFT SHOP

