



Project # 2 - A Tribute to Fan Ho (12 Photos)

By: Matthew Dacayana

INTRODUCTION

For this project, you are required to submit 12 high quality, bring-a-tear-to-your-photography-teacher's-eye images.

Your aim is to further expand your understanding of your chosen elements (3 to be exact in the Part 1 portion of this project). Replace the black boxes with your own processed .jpgs (please note, the images doesn't have to be rectangular or landscape mode only. Portrait mode is acceptable too).

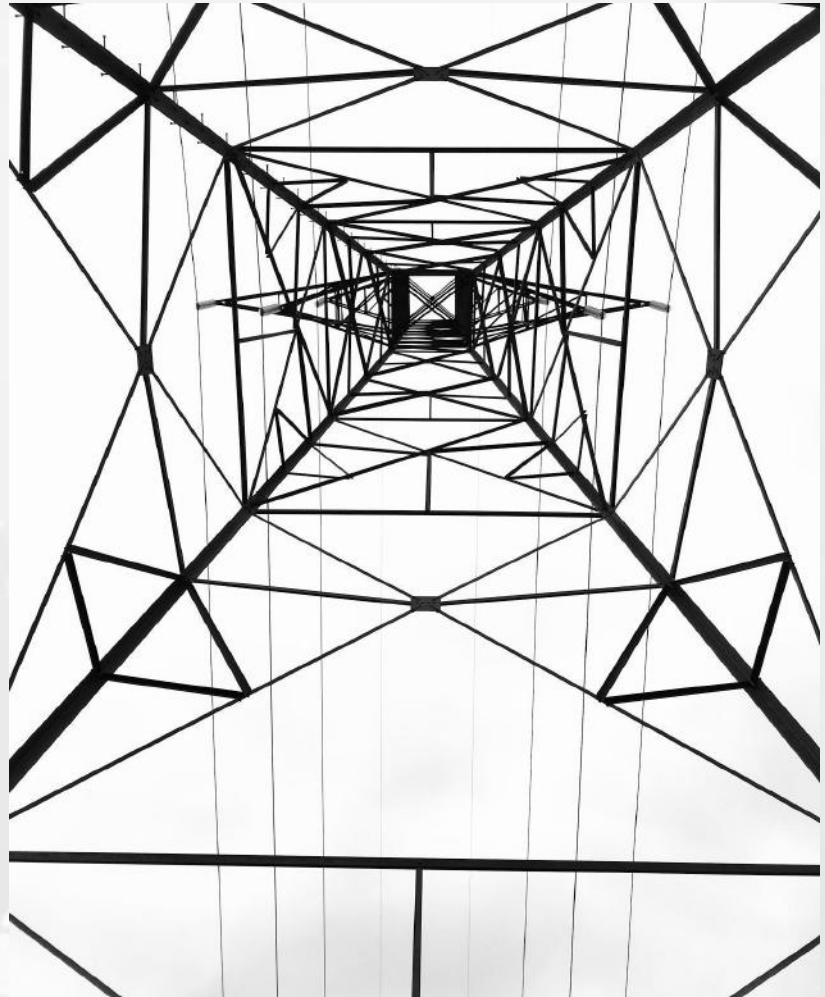
If you're an online student and have only access to your phone, you may still shoot your images as a .jpg OR Raw (if your phone allows it). Upload your shot to Drive and then from Drive, open and edit your images in Photopea. Steps in processing can be found in the Part 2 post on our class site.

In-class students must shoot their images using a DSLR, in full manual and Raw format only. You are all to use this same template to organize and submit your work. Please don't change the typeface (ie fonts) as you will lose marks on formatting!

Element # 1: Balance

Title: Powering Shapes

This is a photo I took by standing under an electrical tower, then I took the shot while looking straight up. I think this photo has the element of balance because the shapes from the electrical tower help to give the photo "balance" and helps to show that parts of the photo are similar to other parts of the photo.



Element # 1: Balance

Title: Lines of beads

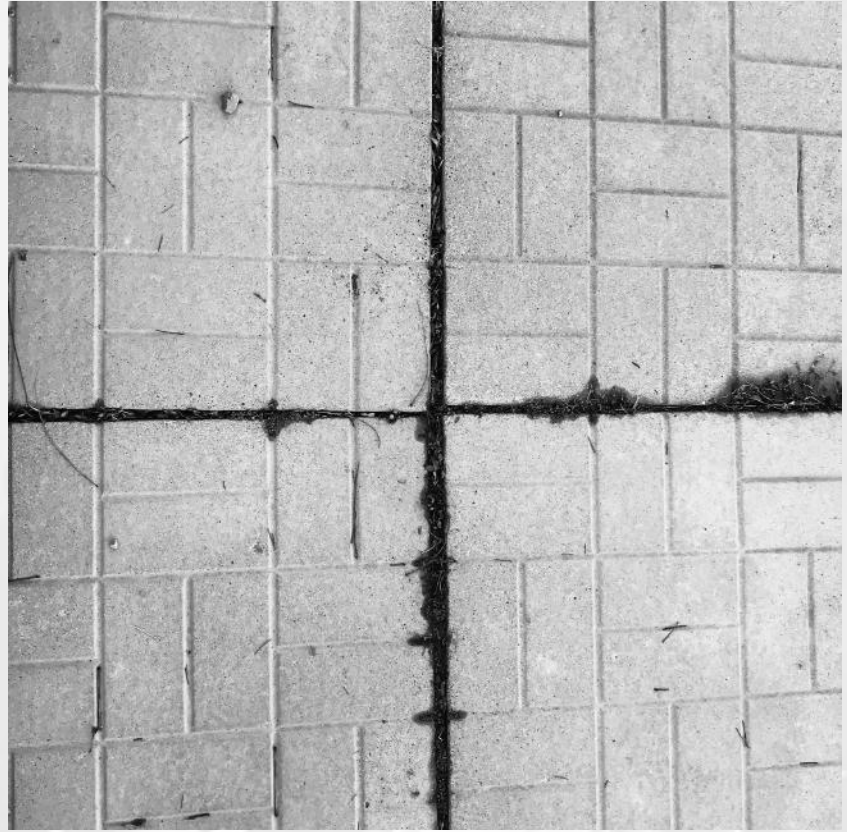
This is a photo that I took in my house by kneeling down and taking a shot of the beads on my curtains near a large window. I think that this photo contains the element balance because the beads on the curtain are both on two sides and they give a path that leads to the top of the photo.



Element # 1: Balance

Title: Four Tiled Squares

This is a photo that I took in front of my house by taking a shot of a stone tiled floor. I think that this photo contains the element of balance because there are four squares that fit together in the photo. No square isn't too different from one another and each have tiles that are all the same shape which are rectangles.



Element # 1: Balance

Title: Even Circle

This is a photo that I took of my dining table in my kitchen. I think that this photo has the element of balance because everything on the table matches its opposite side and no shapes are different from one another. The patterns that are on each table mat is the same on each end of the table. The parts of the table that aren't covered make similar shapes on the table as well. The flowers in the mug are in the middle to help show the photo is in balance.



Element # 2: Dynamic Tension

Title: Dark Branches

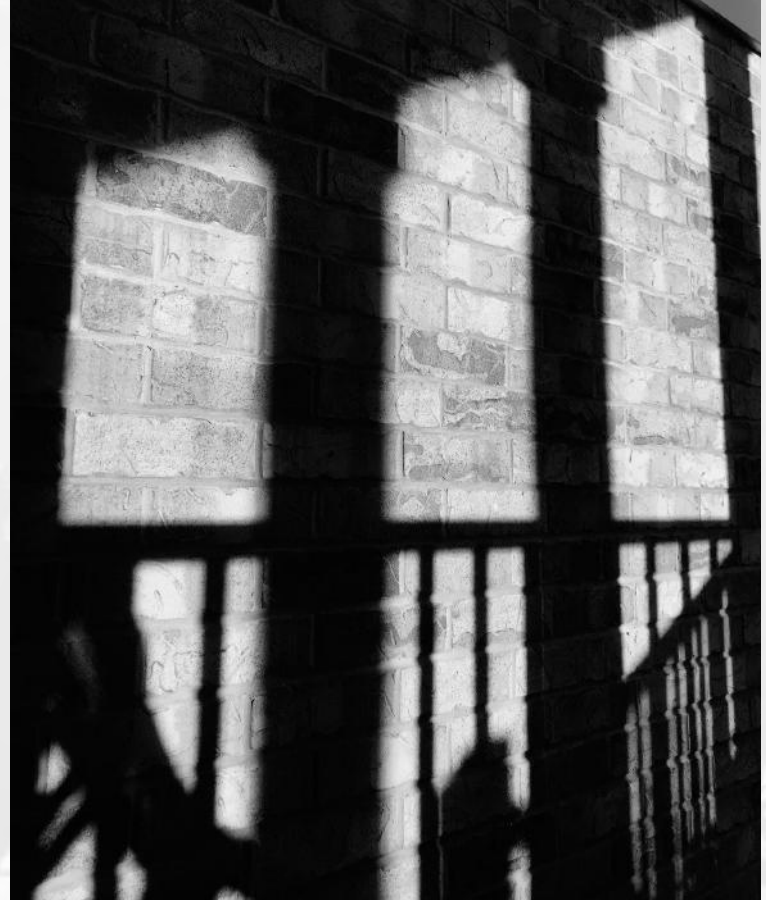
This is a photo that I took near a forest close to my house. I found a tree that had many branches and had little leaves left then took a shot from a distance. I think that this photo has the element dynamic tension because the trees' structure with the branches and the dark wood help to show diverging lines toward viewers.



Element # 2: Dynamic Tension

Title: Lighting shadow

This is a photo I took near my house when the sun was shining on my porch creating some shadow which appeared on the side of my neighbours house. This photo has the element dynamic tension because the structure of my porch gave lots of diverging lines and shapes to look at through the photo.



Element # 2: Dynamic Tension

Title: Leading shapes

I took this photo near the front of my house my taking a shot of a lantern and including the porch of my neighbours house. This photo has the element dynamic tension because this photo contains many shapes and diverging lines that can help lead the viewer's eyes towards the top of the photo.



Element # 2: Dynamic Tension

Title: Staring up

This is a photo that I took near the side of the staircase. I think that this photo has the element of Dynamic Tension because of the lines that help lead the viewer's eye to the top of the photo. One thing that I find unique about this photo is how the top of the photo leads toward the darkest part, and the line near the bottom right of the photo leads to the lightest part of the photo.



Element #3: Pattern, Texture, Many

Title: Blooming Whites

This is a photo I took of some blooming white flowers near a forest. This photo has the element of Pattern, Texture, Many because this photo shows the pattern of white flowers, texture that can be seen by the flowers, and more flowers in the background that can be seen as many.



Element # 3: Pattern, Texture, Many

Title: Piling Leaves

This is a photo I took of a lot of leaves I found underneath some trees in a forest near my house. This photo has the element Pattern, Texture, Many because the leaves give a pattern, while showing off texture, and the large amount of leaves gives the many. Though there are many different colored leaves, we are able to see some texture of the darker leaves and also the lighter color leaves.



Element # 3: Pattern, Texture, Many

Title: Rocky Floor

This is a photo that I took while walking on a rocky path. This photo shows the element Pattern, Texture, Many because the rocks help to show pattern by the familiar shapes, the small rocks up close help to show texture and all the rocks seen in the photo are shown to be a large amount. What I like about this photo is that the rocks are not all the same size, which helps the viewer see the textures of the different sizes of rocks.



Element # 3: Pattern,Texture,Many

Title: Branching Out

This is a photo that I took of some branches sticking out of a tree that had fell on the ground. I think this photo has the element of Pattern,Texture,Many. Pattern is shown from the branches that are seen. The texture can be seen on the branches closest to the photo. Many can be seen from the large amount of branches in the photo.

