



Project # 2 - A Tribute to Fan Ho (12 Photos)

By: Caitlin Watson

INTRODUCTION

For this project, you are required to submit 12 high quality, bring-a-tear-to-your-photography-teacher's-eye images.

Your aim is to further expand your understanding of your chosen elements (3 to be exact in the Part 1 portion of this project). Replace the black boxes with your own processed .jpgs (please note, the images doesn't have to be rectangular or landscape mode only. Portrait mode is acceptable too).

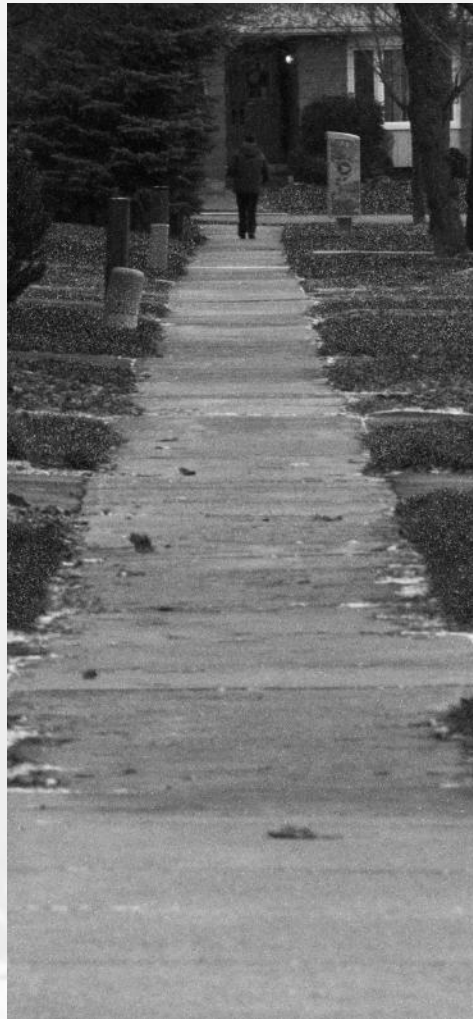
If you're an online student and have only access to your phone, you may still shoot your images as a .jpg OR Raw (if your phone allows it). Upload your shot to Drive and then from Drive, open and edit your images in Photopea. Steps in processing can be found in the Part 2 post on our class site.

In-class students must shoot their images using a DSLR, in full manual and Raw format only. You are all to use this same template to organize and submit your work. Please don't change the typeface (ie fonts) as you will lose marks on formatting!

Balance

Title: Along the Walkway

This photo has an element of balance because there is a sense of symmetry in this photo. With the addition of the person walking in the center of the picture, which is one of the strongest points of a picture, it further proves there is balance in this photo. The sidewalk, also provides a line for your eye to follow and the person draws the eye which will give a sense of harmony when looking at the the picture.



Balance

Title: Between the Houses

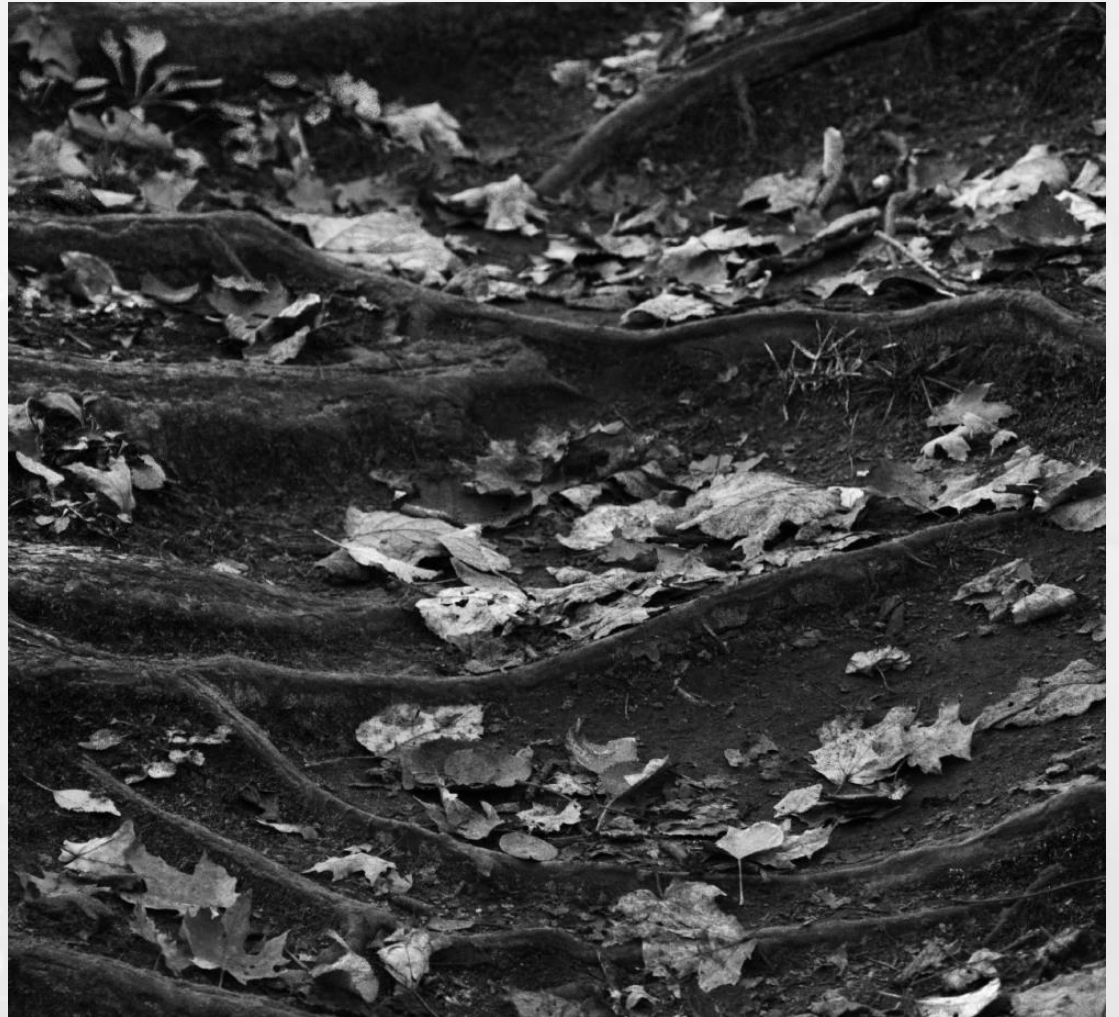
This image creates the sense of symmetrical balance and harmony. The crack on the pavement on the road helps draw your eye toward the car between the houses. The houses also help provide a sense of balance because they both sit on edges of the picture which helps invoke balance in the picture.



Balance

Title: Watch Your Step

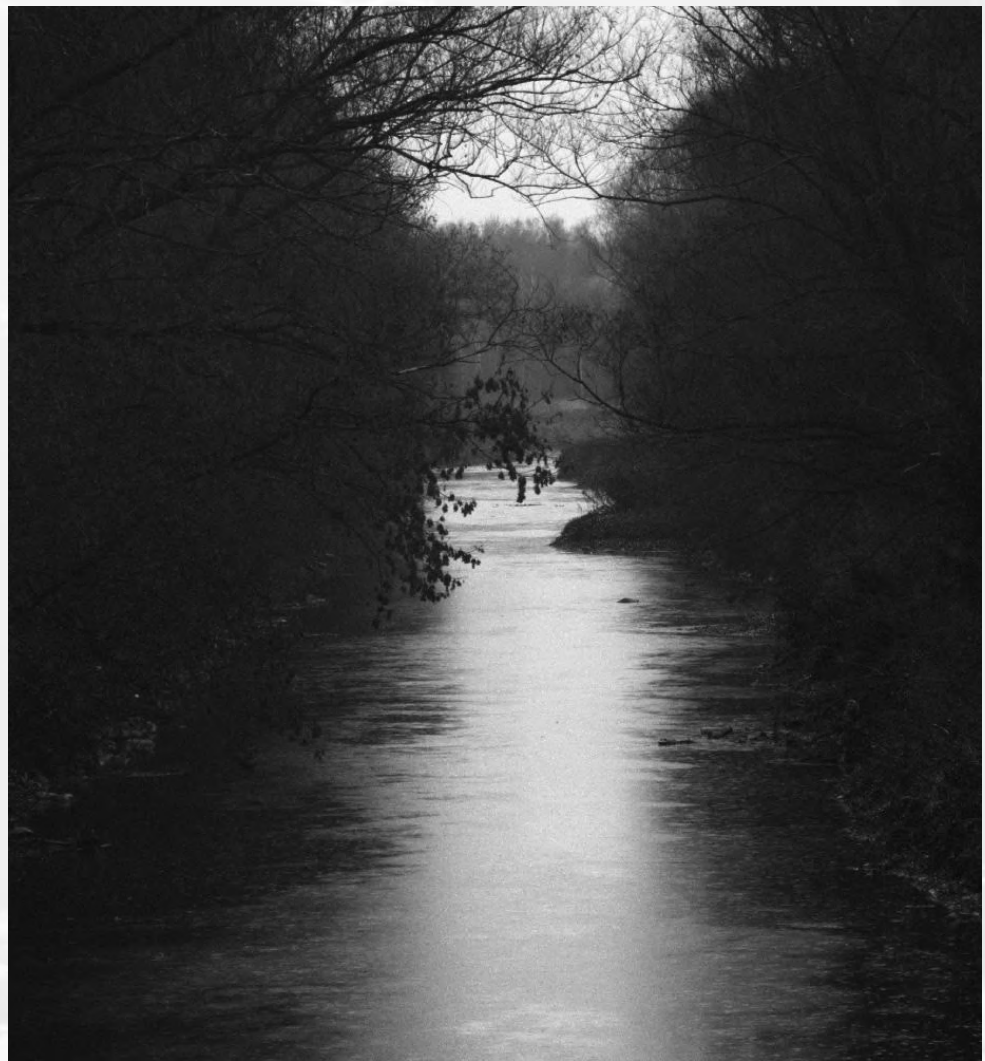
In the image the roots help invoke a sense of balance because the roots come from both sides of the photo which draw the eye in toward the center of the picture which help influence the sense of harmony. The roots divide into different levels and the leaves on the ground help guide your eye upward giving the scenes of balance.



Balance

Title: Above The Water

Balance is shown in this picture by the light that shines across the water gives the eye a line to follow which further shows that this image has symmetry. The trees on the side also help invoke the feeling of symmetrical balance and harmony in the picture because they guide the eye to the important subjects of the image.



Dynamic Tension

Title: Along the Line

The line in this image helps draw the eye into the image and creates the sense of movement. By the line going off to one side it draws the eye and therefore creates momentum. The momentum helps creates a kind of tension.



Dynamic Tension

Title: Shadow of a Tree

The branches of the trees go off in competing directions which effectively creates the element of dynamic tension. By the tree branches going off in different directions it keeps the eye alert and moving outward in different directions.



Dynamic Tension

Title: The Walking Couple

Dynamic Tension is used in this picture when looking at the couple and following where they are going, which therefore creating a scene of movement. This image creates a feeling of tension because at some point the path disappears so as the couple keep the momentum your eye can't see where they are going, which will create tension.



Dynamic Tension

Title: WatchDog

Dynamic Tension is created in this photo through following the dynamic sight lines of the dog, which therefore creates a sense of uncertainty of what the dog is looking at this will help invoke the feeling of unpredictability so that creates the feeling of tension.



Perspective and Depth

Title: The Distant Bridge

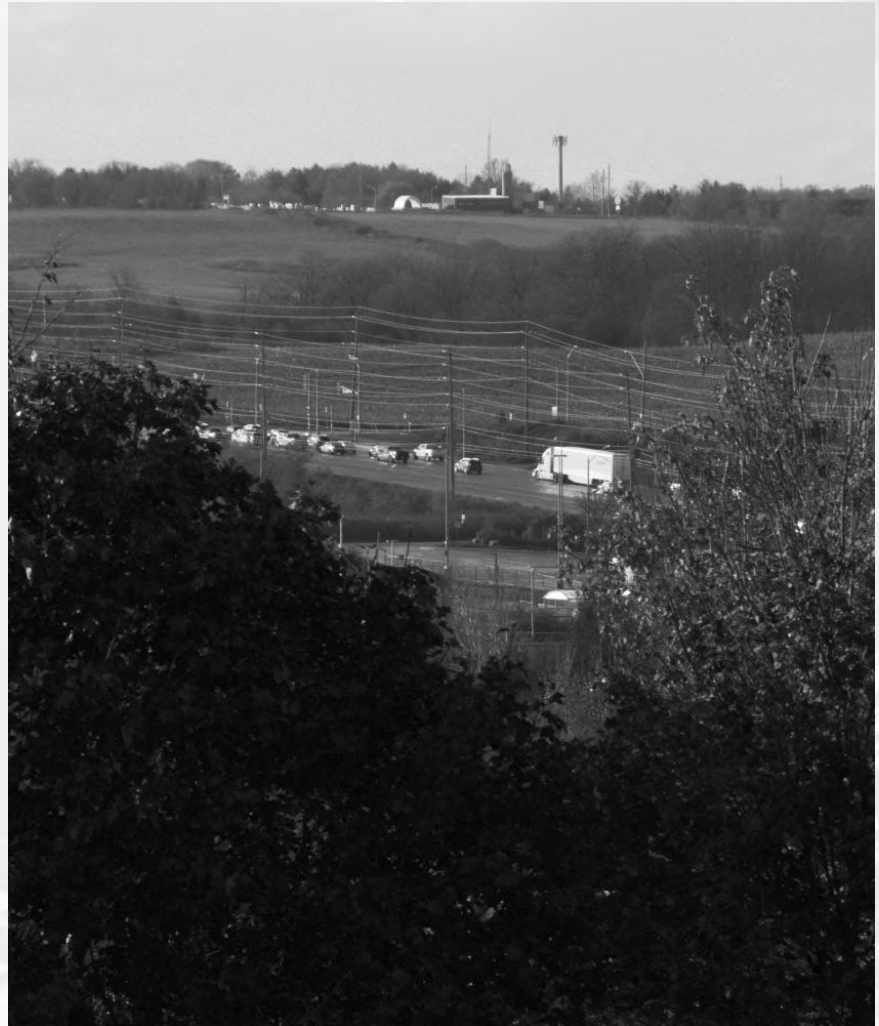
By using the element perspective and depth because of the position of the bridge divides the lighter area from the darker area. As well the darkness on the side of the image forces your eye into the light of the open space. By having the darker colours in the back and the lighter colours in the front it brings your eye into the photo.



Perspective and Depth

Title: Between the Trees

This image uses colour strength to strengthen the perspective and depth. The darkness of the leaves in the foreground leads your eye into the background which gives it the sense of depth. The trees are used to frame and the road and the farmland which provides a different perspective and also aids in providing depth.



Perspective and Depth

Title: The Water Droplets

The use of lights and darks in this photo help enhance the element perspective and depth. The plant in the front is dark and the background is light which helps bring out the strengthen depth. Having the darker shade in foreground and the lighter shades in the background which helps provide the element of perspective and depth.



Perspective and Depth

Title: In The Distance

Perspective and depth is used in this photo because by having the darker colours in the front it draws your eye towards the lighter colours giving it a sense of perspective and depth. The trees on the side of the help frame the bridge and draw your eye back towards the bridge and helps enhance the element of perspective and depth.

