



Project # 2 - A Tribute to Fan Ho (12 Photos)
By: Ana Turiga

INTRODUCTION

For this project, you are required to submit 12 high quality, bring-a-tear-to-your-photography-teacher's-eye images.

Your aim is to further expand your understanding of your chosen elements (3 to be exact in the Part 1 portion of this project). Replace the black boxes with your own processed .jpgs (please note, the images doesn't have to be rectangular or landscape mode only. Portrait mode is acceptable too).

If you're an online student and have only access to your phone, you may still shoot your images as a .jpg OR Raw (if your phone allows it). Upload your shot to Drive and then from Drive, open and edit your images in Photopea. Steps in processing can be found in the Part 2 post on our class site.

In-class students must shoot their images using a DSLR, in full manual and Raw format only. You are all to use this same template to organize and submit your work.

Element # 1 (Contrast)

Photo 1



Photo 1

Photo 1 & 2

In photo one the brightness is lighter than the other. Such as the sky and sunset compared to the ground. In photo 2 there is more details than the sky. The brightness is from the sky is brighter than the bridge.

Photo 2



Photo 2

Element # 1 (Contrast)



Photo 3

Photo 3 & 4

In photo 3 the main subject the center leaves is darker (shades) while the background behind is lighter. The details are shown visibility more on the background rather than the center leaves. In photo 4 there are visibly more details and lighting on main subject which is the branches/leaves. Lighting is lighter too compared to the background.



Photo 4

Element # 2 (Pattern, texture and more)



Photo 1

Photo 1 & 2

In photo one the texture and lines of the leaf is visible. It is detailed to visually show the lines of the leaf. Photo 2 visibly shows the bridge patterns and texture. The holes as well as the lines make it seem like as if I can feel the textures.

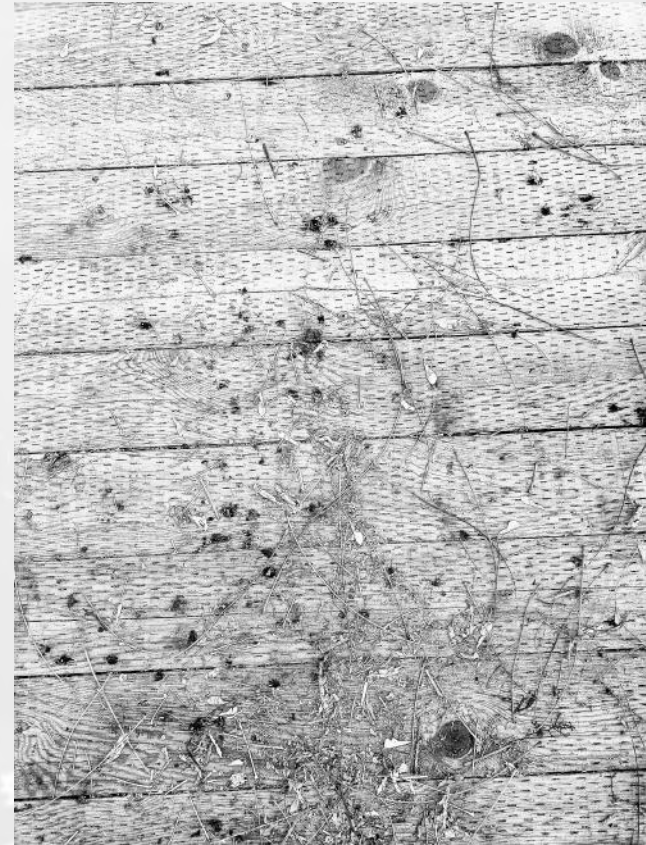


Photo 2

Element # 2 (Pattern, texture and more)



In photo 3 the patterns on the bridge such as the lines and woodbridge are visible it shows a pattern as well as variety of textures. In photo 4 the textures from the bottom lamp is visible. The lines along with smaller thin lines



Photo 3

Photo 4

Element # 3 (looking and interest)



Photo 1

In photo 1 there a lot of looking/interest such as the center flowers there is more looks in it rather than the grass. The white flower pedals colour stand out the most in the photo.

Photo 1 & 2

In photo 2 the looking / interest is the flower pebble colours, there are two types a white and pinker pigment. Another looking the the leaves shades. One side is lighter than the other.



Photo 2

Element # (Looking and interest)



Photo 3

Photo 4



In photo 3 the looking/ interest is the lake scenery. The views of it looks interesting from the details of it. In photo 4 the looking/interest is the scenery of the lake and shadows reflecting onto the lake.

Photo 3 & 4